



# Database Management

# Copyrights and Trademark Notices

**Telestream.** Copyright © 2021 Telestream, LLC and its Affiliates. All rights reserved. No part of this publication may be reproduced, transmitted, transcribed, altered, or translated into any languages without written permission of Telestream, LLC. Information and specifications in this document are subject to change without notice and do not represent a commitment on the part of Telestream. Specifications subject to change without notice.

Telestream, CaptionMaker, Cerify, DIVA, Episode, Flip4Mac, FlipFactory, Flip Player, GraphicsFactory, Kumulate, Lightspeed, MetaFlip, Post Producer, ScreenFlow, Switch, Tempo, TrafficManager, Vantage, VOD Producer, and Wirecast are registered trademarks and Aurora, ContentAgent, Cricket, e-Captioning, Inspector, iQ, iVMS, iVMS ASM, MacCaption, Pipeline, Sentry, Surveyor, Vantage Cloud Port, CaptureVU, FlexVU, PRISM, Sentry, Stay Genlock, Aurora, and Vidchecker are trademarks of Telestream, LLC and its Affiliates. All other trademarks are the property of their respective owners.

**Adobe.** Adobe® HTTP Dynamic Streaming Copyright © 2014 Adobe Systems. All rights reserved.

**Apple.** QuickTime, MacOS X, and Safari are trademarks of Apple, Inc. Bonjour, the Bonjour logo, and the Bonjour symbol are trademarks of Apple, Inc.

**Avid.** Portions of this product Copyright 2012 Avid Technology, Inc.

**CoreOS.** Developers of ETCD.

**Dolby.** Dolby and the double-D symbol are registered trademarks of Dolby Laboratories Licensing Corporation.

**Fraunhofer IIS and Thomson Multimedia.** MPEG Layer-3 audio coding technology licensed from Fraunhofer IIS and Thomson Multimedia.

**Google.** VP6 and VP8 Copyright Google Inc. 2014 All rights reserved.

**MainConcept.** MainConcept is a registered trademark of MainConcept LLC and MainConcept AG. Copyright 2004 MainConcept Multimedia Technologies.

**Manzanita.** Manzanita is a registered trademark of Manzanita Systems, Inc.

**MCW.** HEVC Decoding software licensed from MCW.

**MediaInfo.** Copyright © 2002-2013 MediaArea.net SARL. All rights reserved.

THIS SOFTWARE IS PROVIDED BY THE COPYRIGHT HOLDERS AND CONTRIBUTORS "AS IS" AND ANY EXPRESS OR IMPLIED WARRANTIES, INCLUDING, BUT NOT LIMITED TO, THE IMPLIED WARRANTIES OF MERCHANTABILITY AND FITNESS FOR A PARTICULAR PURPOSE ARE DISCLAIMED. IN NO EVENT SHALL THE COPYRIGHT HOLDER OR CONTRIBUTORS BE LIABLE FOR ANY DIRECT, INDIRECT, INCIDENTAL, SPECIAL, EXEMPLARY, OR CONSEQUENTIAL DAMAGES (INCLUDING, BUT NOT LIMITED TO, PROCUREMENT OF SUBSTITUTE GOODS OR SERVICES; LOSS OF USE, DATA, OR PROFITS; OR BUSINESS INTERRUPTION) HOWEVER CAUSED AND ON ANY THEORY OF LIABILITY,

WHETHER IN CONTRACT, STRICT LIABILITY, OR TORT (INCLUDING NEGLIGENCE OR OTHERWISE) ARISING IN ANY WAY OUT OF THE USE OF THIS SOFTWARE, EVEN IF ADVISED OF THE POSSIBILITY OF SUCH DAMAGE.

**Microsoft.** Microsoft, Windows NT|2000|XP|XP Professional|Server 2003|Server 2008 |Server 2012|Server 2016|Server 2019, Windows 7, Windows 8, Windows 10, Media Player, Media Encoder, .Net, Internet Explorer, SQL Server 2005|2008|2012|2016|2019, and Windows Media Technologies are trademarks of Microsoft Corporation.

**NLOG, MIT, Apache, Google.** NLog open source code used in this product under MIT License and Apache License is copyright © 2014-2016 by Google, Inc., © 2016 by Stabzs, © 2015 by Hiro, Sjoerd Tieleman, © 2016 by Denis Pushkarev, © 2015 by Dash Industry Forum. All rights reserved.

**SharpSSH2.** SharpSSH2 Copyright (c) 2008, Ryan Faircloth. All rights reserved. Redistribution and use in source and binary forms, with or without modification, are permitted provided that the following conditions are met:

Redistributions of source code must retain the above copyright notice, this list of conditions and the following disclaimer.

Redistributions in binary form must reproduce the above copyright notice, this list of conditions and the following disclaimer in the documentation and/or other materials provided with the distribution.

Neither the name of Diversified Sales and Service, Inc. nor the names of its contributors may be used to endorse or promote products derived from this software without specific prior written permission.

THIS SOFTWARE IS PROVIDED BY THE COPYRIGHT HOLDERS AND CONTRIBUTORS "AS IS" AND ANY EXPRESS OR IMPLIED WARRANTIES, INCLUDING, BUT NOT LIMITED TO, THE IMPLIED WARRANTIES OF MERCHANTABILITY AND FITNESS FOR A PARTICULAR PURPOSE ARE DISCLAIMED. IN NO EVENT SHALL THE COPYRIGHT OWNER OR CONTRIBUTORS BE LIABLE FOR ANY DIRECT, INDIRECT, INCIDENTAL, SPECIAL, EXEMPLARY, OR CONSEQUENTIAL DAMAGES (INCLUDING, BUT NOT LIMITED TO, PROCUREMENT OF SUBSTITUTE GOODS OR SERVICES; LOSS OF USE, DATA, OR PROFITS; OR BUSINESS INTERRUPTION) HOWEVER CAUSED AND ON ANY THEORY OF LIABILITY, WHETHER IN CONTRACT, STRICT LIABILITY, OR TORT (INCLUDING NEGLIGENCE OR OTHERWISE) ARISING IN ANY WAY OUT OF THE USE OF THIS SOFTWARE, EVEN IF ADVISED OF THE POSSIBILITY OF SUCH DAMAGE.

**Swagger.** Licensed from SmartBear.

**Telerik.** RadControls for ASP.NET AJAX copyright Telerik All rights reserved.

**VoiceAge.** This product is manufactured by Telestream under license from VoiceAge Corporation.

**x264 LLC.** The product is manufactured by Telestream under license from x264 LLC.

**Xceed.** The Software is Copyright ©1994-2012 Xceed Software Inc., all rights reserved.

**ZLIB.** Copyright (C) 1995-2013 Jean-loup Gailly and Mark Adler.



Other brands, product names, and company names are trademarks of their respective holders, and are used for identification purpose only.

## MPEG Disclaimers

### MPEGLA MPEG2 Patent

ANY USE OF THIS PRODUCT IN ANY MANNER OTHER THAN PERSONAL USE THAT COMPLIES WITH THE MPEG-2 STANDARD FOR ENCODING VIDEO INFORMATION FOR PACKAGED MEDIA IS EXPRESSLY PROHIBITED WITHOUT A LICENSE UNDER APPLICABLE PATENTS IN THE MPEG-2 PATENT PORTFOLIO, WHICH LICENSE IS AVAILABLE FROM MPEG LA, LLC, 4600 S. Ulster Street, Suite 400, Denver, Colorado 80237 U.S.A.

### MPEGLA MPEG4 VISUAL

THIS PRODUCT IS LICENSED UNDER THE MPEG-4 VISUAL PATENT PORTFOLIO LICENSE FOR THE PERSONAL AND NON-COMMERCIAL USE OF A CONSUMER FOR (i) ENCODING VIDEO IN COMPLIANCE WITH THE MPEG-4 VISUAL STANDARD ("MPEG-4 VIDEO") AND/OR (ii) DECODING MPEG-4 VIDEO THAT WAS ENCODED BY A CONSUMER ENGAGED IN A PERSONAL AND NON-COMMERCIAL ACTIVITY AND/OR WAS OBTAINED FROM A VIDEO PROVIDER LICENSE IS GRANTED OR SHALL BE IMPLIED FOR ANY OTHER USE. ADDITIONAL INFORMATION INCLUDING THAT RELATING TO PROMOTIONAL, INTERNAL AND COMMERCIAL USES AND LICENSING MAY BE OBTAINED FROM MPEG LA, LLC. SEE [HTTP://WWW.MPEGLA.COM](http://www.mpegla.com).

### MPEGLA AVC

THIS PRODUCT IS LICENSED UNDER THE AVC PATENT PORTFOLIO LICENSE FOR THE PERSONAL USE OF A CONSUMER OR OTHER USES IN WHICH IT DOES NOT RECEIVE REMUNERATION TO (i) ENCODE VIDEO IN COMPLIANCE WITH THE AVC STANDARD ("AVC VIDEO") AND/OR (ii) DECODE AVC VIDEO THAT WAS ENCODED BY A CONSUMER ENGAGED IN A PERSONAL ACTIVITY AND/OR WAS OBTAINED FROM A VIDEO PROVIDER LICENSED TO PROVIDE AVC VIDEO. NO LICENSE IS GRANTED OR SHALL BE IMPLIED FOR ANY OTHER USE. ADDITIONAL INFORMATION MAY BE OBTAINED FROM MPEG LA, L.L.C. SEE [HTTP://WWW.MPEGLA.COM](http://www.mpegla.com).

## MPEG4 SYSTEMS

THIS PRODUCT IS LICENSED UNDER THE MPEG-4 SYSTEMS PATENT PORTFOLIO LICENSE FOR ENCODING IN COMPLIANCE WITH THE MPEG-4 SYSTEMS STANDARD, EXCEPT THAT AN ADDITIONAL LICENSE AND PAYMENT OF ROYALTIES ARE NECESSARY FOR ENCODING IN CONNECTION WITH (i) DATA STORED OR REPLICATED IN PHYSICAL MEDIA WHICH IS PAID FOR ON A TITLE BY TITLE BASIS AND/OR (ii) DATA WHICH IS PAID FOR ON A TITLE BY TITLE BASIS AND IS TRANSMITTED TO AN END USER FOR PERMANENT STORAGE AND/OR USE. SUCH ADDITIONAL LICENSE MAY BE OBTAINED FROM MPEG LA, LLC. SEE [HTTP://WWW.MPEGLA.COM](http://www.mpegla.com) FOR ADDITIONAL DETAILS.

## Limited Warranty and Disclaimers

Telestream, LLC (the Company) warrants to the original registered end user that the product will perform as stated below for a period of one (1) year from the date of shipment from factory:

*Hardware and Media*—The Product hardware components, if any, including equipment supplied but not manufactured by the Company but NOT including any third party equipment that has been substituted by the Distributor for such equipment (the “Hardware”), will be free from defects in materials and workmanship under normal operating conditions and use.

## Warranty Remedies

Your sole remedies under this limited warranty are as follows:

*Hardware and Media*—The Company will either repair or replace (at its option) any defective Hardware component or part, or Software Media, with new or like new Hardware components or Software Media. Components may not be necessarily the same, but will be of equivalent operation and quality.

## Software Updates

Except as may be provided in a separate agreement between Telestream and You, if any, Telestream is under no obligation to maintain or support the Software and Telestream has no obligation to furnish you with any further assistance, technical support, documentation, software, update, upgrades, or information of any nature or kind.

## Restrictions and Conditions of Limited Warranty

This Limited Warranty will be void and of no force and effect if (i) Product Hardware or Software Media, or any part thereof, is damaged due to abuse, misuse, alteration, neglect, or shipping, or as a result of service or modification by a party other than the Company, or (ii) Software is modified without the written consent of the Company.

## Limitations of Warranties

THE EXPRESS WARRANTIES SET FORTH IN THIS AGREEMENT ARE IN LIEU OF ALL OTHER WARRANTIES, EXPRESS OR IMPLIED, INCLUDING, WITHOUT LIMITATION, ANY WARRANTIES OF MERCHANTABILITY OR FITNESS FOR A PARTICULAR PURPOSE. No oral or written information or advice given by the Company, its distributors, dealers or agents, shall increase the scope of this Limited Warranty or create any new warranties.

**Geographical Limitation of Warranty**—This limited warranty is valid only within the country in which the Product is purchased/licensed.

**Limitations on Remedies**—YOUR EXCLUSIVE REMEDIES, AND THE ENTIRE LIABILITY OF TELESTREAM, LLC WITH RESPECT TO THE PRODUCT, SHALL BE AS STATED IN THIS LIMITED WARRANTY. Your sole and exclusive remedy for any and all breaches of any Limited Warranty by the Company shall be the recovery of reasonable damages which, in the aggregate, shall not exceed the total amount of the combined license fee and purchase price paid by you for the Product.

## Damages

TELESTREAM, LLC SHALL NOT BE LIABLE TO YOU FOR ANY DAMAGES, INCLUDING ANY LOST PROFITS, LOST SAVINGS, OR OTHER INCIDENTAL OR CONSEQUENTIAL DAMAGES ARISING OUT OF YOUR USE OR INABILITY TO USE THE PRODUCT, OR THE BREACH OF ANY EXPRESS OR IMPLIED WARRANTY, EVEN IF THE COMPANY HAS BEEN ADVISED OF THE POSSIBILITY OF THOSE DAMAGES, OR ANY REMEDY PROVIDED FAILS OF ITS ESSENTIAL PURPOSE.

Further information regarding this limited warranty may be obtained by writing:  
Telestream, LLC  
848 Gold Flat Road  
Nevada City, CA 95959 USA

You can call Telestream during U. S. business hours via telephone at (530) 470-1300.

## Regulatory Compliance

Electromagnetic Emissions: FCC Class A, EN 55022 Class A, EN 61000-3-2/-3-3, CISPR 22 Class A

Electromagnetic Immunity: EN 55024/CISPR 24, (EN 61000-4-2, EN 61000-4-3, EN 61000-4-4, EN 61000-4-5, EN 61000-4-6, EN 61000-4-8, EN 61000-4-11)

Safety: CSA/EN/IEC/UL 60950-1 Compliant, UL or CSA Listed (USA and Canada), CE Marking (Europe)

California Best Management Practices Regulations for Perchlorate Materials:  
This Perchlorate warning applies only to products containing CR (Manganese Dioxide) Lithium coin cells. Perchlorate Material-special handling may apply. See [www.dtsc.ca.gov/hazardouswaste/perchlorate](http://www.dtsc.ca.gov/hazardouswaste/perchlorate).







# Planning and Managing a Vantage Database

This guide lists Vantage database requirements and explains how to install and manage the Vantage Database.

Installing a database in preparation for Vantage is easiest when you plan carefully, and you have a working knowledge of Windows server administration, Microsoft SQL Server, and installation and configuration of enterprise-level software. Consult your IT group for assistance as necessary.

---

**Note:** Go to [www.telestream.net/telestream-support/vantage/support.htm](http://www.telestream.net/telestream-support/vantage/support.htm) to browse the Vantage Web library, user guides, patches, application notes, and other documents.

---

The following topics provide information for planning, installing, and maintaining a Vantage database:

- [Operating System Requirements](#)
- [Database Server Requirements for SQL Standard](#)
- [Database Selection and Configuration Guidelines](#)
- [Installing MS SQL Server](#)
- [Installing the Vantage Database](#)
- [Backing Up and Restoring the Vantage Database](#)
- [Shrinking a Full Database](#)
- [Moving the Vantage Domain Database to Another Database](#)

## Operating System Requirements

The Vantage Domain Database and the MS SQL Server for Vantage should be installed and operated only on the following operating systems (64-bit only):

- Windows Server 2012 R2
- Windows Server 2016 Standard or Data Center Edition
- Windows Server 2019 Standard or Data Center Edition

---

**Note:** Operating System support presented here is current at the time of publication. However, updates to supported Operating Systems may occur. Verify that the server on which you plan to install Vantage meets the platform requirements, as specified at [telestream.net/vantage/tech-specs.htm](http://telestream.net/vantage/tech-specs.htm).

---

## Database Server Requirements for SQL Standard

The following recommendations are for customers running SQL Standard. To determine which version of SQL to use, please refer to the [Guidelines for Selecting SQL Express or SQL Standard](#).

Telestream recommends using “per core” SQL Standard licensing when using Vantage. In this licensing scenario, all physical cores on the server (or virtual machine) must be licensed. Please contact your IT department or Microsoft for more information about SQL Standard licensing options. For Microsoft’s discussion of licensing by cores, refer to this URL: <http://www.microsoft.com/licensing/about-licensing/briefs/licensing-by-cores.aspx>.

Telestream recommends the following hardware for dedicated database servers:

SQL Standard: 4-Core Server Minimum Recommendations

Component	Specification
CPU	64-bit, 4 physical cores, 8 MB cache, 3.0 GHz or greater. For example, Intel E3-1230 v2.
RAM	16 GB DDR minimum required, 32 GB or more recommended for high job volumes; 1600 MHz recommended
OS/Software HDD	RAID-1, 2 drive volume, minimum 7200 RPM, SSD preferred
Database HDD	RAID-5, 3 drive volume, minimum 250 GB per drive, 7200 RPM
Network	Dual 1 GbE or greater NICs
Operating System	Windows Server 2012 R2, 2016, or 2019

SQL Standard: 8-Core Server Minimum Recommendations

Component	Specification
CPU	64-bit, 8 physical core processors, 2.0 GHz or greater. For example, Intel ES-2640 v2.
RAM	24 GB DDR minimum required, 32 GB or more recommended for high job volumes; 1600 MHz recommended
OS/Software HDD	RAID-1, 2 drive volume, minimum 7200 RPM, SSD preferred
Database HDD	RAID-5, 3 drive volume, minimum 250 GB per drive, 7200 RPM
Network	Dual 1 GbE or greater NICs
Operating System	Windows Server 2012 R2, 2016, or 2019

Please see the following page and table for additional guidelines.

When choosing your database server, the primary consideration is how many clients will access job status views simultaneously. Real-time job status views are the largest consumer of database CPU resources.

The following table can guide you in selecting a server and configuring the system.

Job Status View Clients	Database Server	Notes
1 or 2 clients	4-core server	IIS and the Workflow Designer may run on the DB server.
3-8 clients	4-core server	IIS and Workflow Designer must run on a separate server.
More than 8 clients	8-core server (or more)	Contact Telestream for guidance if you plan to have more than 20 clients.

---

**Note:** The recommendations above ensure sufficient CPU headroom for activities such as Workflow Portal operation, running large arrays, deleting jobs, etc.

---

For additional guidelines on database installation in a Vantage domain, see [Database Selection and Configuration Guidelines](#).

## Database Selection and Configuration Guidelines

If no other Microsoft SQL database version is already installed, Vantage automatically installs Microsoft SQL 2019 Express. If a Microsoft SQL database is already installed, Vantage detects it and does not install the default Express version.

Vantage is supported on the following database systems:

- Microsoft SQL Server 2012 Express, Standard, or Enterprise
- Microsoft SQL Server 2014 Express, Standard, or Enterprise
- Microsoft SQL Server 2016 Express, Standard, or Enterprise
- Microsoft SQL Server 2019 Express, Standard, or Enterprise

The MS SQL Server for Vantage should be installed and operated only on the following operating systems (64-bit recommended for performance):

- Windows Server 2012 R2
- Windows Server 2016 Standard or Data Center Edition
- Windows Server 2019 Standard or Data Center Edition

The following topics provide guidelines for choosing and implementing a database:

- [Guidelines for Selecting SQL Express or SQL Standard](#)
- [Guidelines for an Array Installation with SQL Standard](#)
- [Other Database Configurations](#)
- [Improving Uptime with Mirroring or Availability Groups](#)
- [Installing the Vantage Database](#)

---

**Note:** SQL database tools must not be used to move a Vantage domain database of one version to a later version of Vantage. To upgrade Vantage, only use Vantage installers or the Vantage Database Deployment Utility.

---

## Guidelines for Selecting SQL Express or SQL Standard

The decision about whether to use SQL Standard or Express depends on your planned maximum database size and the expected average volume of database traffic. The following topics provide information to help you choose which database to use:

- [Comparing SQL Express and SQL Standard](#)
- [Vantage Guidelines for SQL 2019 Express](#)

### Comparing SQL Express and SQL Standard

SQL Express and SQL Standard database limitations are compared in this table:

SQL 2014/2016/2019 Express	SQL 2014/2016/2019 Standard
Max. Cores: 4	Max. Cores: 16/24/24
Max. DB RAM: 1 GB	Max. DB RAM: 64/128 /128 GB
Database Size: 10 GB	Max. Database Size: 524 PB

Microsoft offers additional information about SQL Server capabilities and limitations at this URL: <http://msdn.microsoft.com/en-us/library/cc645993>.

Vantage ships with SQL 2019 Express, which is suitable for single-node installations or Array installations up to four nodes. For very large installations, SQL Standard may be required.

### Vantage Guidelines for SQL 2019 Express

Vantage installs SQL 2019 Express, which allows up to 10GB of database storage. Due to this storage limitation, SQL Express is not suitable for every Vantage installation.

The following guidelines indicate the maximums for using Vantage with SQL 2019 Express:

- **Transcoding:** SQL 2019 Express can support up to 15,000 Vantage jobs in the database at a time. **Note:** *This assumes that each job contains 10 actions. More actions in a job require more storage, allowing fewer jobs.*
- **TrafficManager:** SQL 2019 Express can support up to 1,500 TrafficManager commercials in inventory at a time.
- **Vantage Array:** Up to four (4) Vantage servers can simultaneously connect to SQL 2019 Express as part of a Vantage Array. This includes any redundant or backup machines.

### Database Shutoff Feature for SQL Express

If a Vantage single-node or Array installation using SQL Express nears the SQL Express database size limit, Vantage stops accepting jobs. Attempts to submit jobs manually launches a warning dialog indicating that the database is at or near capacity. To release space in the database, see the procedure in the Managing a Vantage Domain chapter: *Shrinking a Full Database* in the Vantage Domain Management Guide.

## Guidelines for an Array Installation with SQL Standard

For high traffic installations, Vantage performance improves when you use SQL Standard and separate the database from other services such as the operating system and Vantage services. The following guidelines provide increasing levels of performance improvement:

- Always place SQL Standard and the database on a dedicated server, separate from Vantage services, the Vantage store, and the input and output files. This approach provides the largest increase in performance.
- Place the Vantage database files on a dedicated physical drive or RAID array, separate from the operating system.

---

**Note:** Installing a Vantage domain database on a separate server does not require an extra Vantage license for that server.

---

When installing a Vantage array with SQL Standard, ensure that the server hardware meets the requirements described in [Operating System Requirements](#). To improve database availability, see [Improving Uptime with Mirroring or Availability Groups](#).

### Recommendations for Large Arrays

For arrays containing 10 or more nodes, consider these additional recommendations: .

Feature	Recommendation
Server memory for DB < 32 GB	64 GB
Server memory for DB > 32 GB	128 GB
Cores	16 cores minimum, 24 cores recommended.
Partitioning	Create a dedicated partition for SQL Server data.
SSD or hard drives	SSDs may provide better performance but only in cases of high I/O. Use SQL to monitor I/O wait times and PERFMON to measure average disk I/O latency. Latency should be less than 0.020 seconds (20 ms).

## Other Database Configurations

Vantage systems can work with other special database configurations:

- For a fully redundant system, you can use SQL Standard with Mirroring. This requires professional services from Telestream with machines and licenses for two SQL Standard databases, plus a third machine running the free SQL Express.
- Large volume systems can use SQL Enterprise.
- You can use SQL with Clustering.

## Improving Uptime with Mirroring or Availability Groups

SQL Server Availability Groups or database mirroring can prevent Vantage domain interruption if a single database server fails. Telestream supports mirroring for SQL Standard 2012 and SQL Standard 2014 and Basic Availability Groups for SQL Standard 2016 and SQL Standard 2019. SQL Enterprise with Clustering may also be used for high availability.

A mirrored database requires the following physical servers:

- A dedicated server to host the principal database
- A dedicated server (of similar capability to the principal database server) to host the mirror database
- An optional dedicated server to host the witness server.

The witness database is a lightweight service which can run effectively on a low-end server, but cannot be installed on a database server.

Basic Availability Groups require:

- A dedicated server to host the primary replica database
- A dedicated server (of similar capacity) to host the secondary replica database
- A reliable witness file share server.

---

**Note:** This guide does not provide instructions for installing or implementing a mirrored database or Availability Groups. Consult your database administrator or contact your Telestream representative regarding installation service options.

---

---

**Note:** Telestream strongly recommends using a dedicated server for the witness server to ensure uninterrupted operation in case of a database failover. If the witness server function is placed on a server with Vantage services, transcoding can consume too many resources and prevent timely database switchover.

---

---

**Note:** If a mirrored database fails over, the domain change is not reflected in Vantage client program title bars, which still show the original domain name. Users can correct this by using File > Change Vantage Domain in the clients to select the new domain.

---

## Installing MS SQL Server

If you are creating or upgrading a Single-Node Vantage installation, pre-installing the database is not necessary. The Vantage Setup installer will install MS SQL Server Express and the Vantage database automatically on the single-node server with the Vantage applications and services.

However, if you are installing or upgrading an existing Vantage Array installation on multiple servers, you need to have MS SQL Server Standard (or better) installed before you install the Vantage product using the Vantage Setup installer. This procedure will guide you through the MS SQL Server Standard installation, and the procedure that follows ([Installing the Vantage Database](#)) will install or upgrade the Vantage database. After SQL Server and the Vantage database are installed, you can install the Vantage Array using the Vantage Setup installer.

This guide does not provide instructions for installing a mirrored database and implementing mirroring. Consult your database administrator or contact your Telestream representative regarding installation service options. To set up the Vantage domain database, follow these procedures in the order listed:

- [Installing SQL Server 2012 Standard](#)
- [Installing SQL Server 2014 Standard](#)
- [Installing SQL Server 2016/2019 Standard](#)
- [Installing the Vantage Database](#)

### Installing SQL Server 2012 Standard

The following procedure explains how to install SQL Server 2012 Standard. If you are installing SQL Server 2014 or SQL Server 2016, please skip to that topic, [Installing SQL Server 2014 Standard](#) or [Installing SQL Server 2016/2019 Standard](#).

Follow these steps to install SQL Server 2012 Standard on a server:

1. Log into the target server with a local administrator account.
2. Insert the SQL Server 2012 Standard DVD into the server's DVD drive and start the installer (*setup.exe*) if it does not run automatically.
3. SQL Server Installation Center—Click Installation in the left column, then select *New installation or add features to an existing installation*.
4. Setup Support Rules—Click OK.
5. Product Key—Enter your product key and click Next.
6. License Terms—Accept the license terms and click Next.
7. SQL Server Updates—Click Next after updates have completed.
8. Feature Selection—Check Database Engine Services and Management Tools, and click Next.



9. Instance Configuration:
  - a. Select Named instance.
  - b. Enter *VANTAGE* in the Named instance field and the Instance ID field.
  - c. Click Next to continue.
10. Disk Space Requirements—Click Next to continue.
11. Server Configuration:
  - a. For SQL Server Agent, the Startup Type should be disabled. (If the Startup Type is set to automatic, the service must be stopped before running Vantage Setup.)
  - b. For Server Database Engine, select NT AUTHORITY\NETWORK SERVICE
  - c. Click Next to continue.
12. Database Engine Configuration:
  - a. Click Add Current User.
  - b. Select Mixed Mode.
  - c. Enter the Vantage sa user password (*vantage12!*) in the Enter Password and Confirm Password fields.
  - d. Click Next to continue.
13. Continue to click through the installer windows accepting the default settings to complete installation.
14. Complete—Click Close to close the SQL Server installer.
15. Select Start > SQL Server Management Studio.
16. Connect to the Vantage domain database using the following information:
  - Server type: Database Engine
  - Server name: [hostname]\VANTAGE
  - Authentication: SQL Server Authentication
  - Login: sa
  - Password: vantage12!
17. In the Object Explorer panel, right-click [hostname]\VANTAGE and select Properties.
18. In the Server Properties window, go to the Memory page.
19. Set the *Maximum server memory (in MB)* to 75% of the system's memory. For example: If the system's memory is 8 GB (8192 MB), then the maximum server memory for SQL should be set to 6 GB (6144 MB) ( $8192 \times 0.75 = 6144$ ).
20. Click OK.
21. Close the SQL Server Management Studio.

Now that SQL Server Standard is installed and configured for Vantage, install the Vantage domain database as explained in this topic: [Installing the Vantage Domain Database](#). The Vantage installer will detect that SQL Standard is already installed, will not install SQL Express, and will attach to the installed instance.

## Installing SQL Server 2014 Standard

Follow these steps to install SQL Server 2014 Standard on a server (skip this topic if you already installed another version of SQL Server):

1. Launch setup from the SQL Server 2014 Standard installation media.
2. In the *SQL Server Installation Center*, go to *Installation* on the left.
3. Select *New SQL Server Stand-alone installation or add features to an existing installation*.
4. On the Product Key page, enter a product key and click Next.
5. Accept the license terms and click Next.
6. Click Next on the Microsoft Update page.
7. On the Setup Role page, select *SQL Server Feature Installation* and click Next.
8. On the Feature Selection page, enable *Database Engine Services, Management Tools – Complete* and click Next.
9. On the Instance Configuration page, select *Named instance*, enter *VANTAGE* and click Next.
10. On the Server Configuration page, click the cell for the account name of the *SQL Server Database Engine* service. After selecting the cell, click the drop-down list and select *<<Browse...>>*.
11. In the *Enter the object name to select* field, type *NETWORK SERVICE* and click OK. Then click Next on the Server Configuration page.
12. On the Database Engine Configuration page, select *Mixed Mode (SQL Server authentication and Windows authentication)*. Enter *vantage12!* for the password and click the *Add Current User* button.
13. (Optional) If you would like to specify a non-default location for the database files, go to the Database Engine Configuration page, select the Database Directories tab, and change the Data root directory path.
14. Click Next on the Database Engine Configuration page.
15. Click install on the Ready to Install page.
16. When installation completes, click Close and close the SQL Server Installation window.
17. From the Start menu, launch the SQL Server 2014 Management Studio.
18. In the *Server name* field, enter *.\vantage* as the server name.
19. Set authentication to *SQL Server Authentication*.
20. Enter *sa* for the login and *vantage12!* for the password.
21. In the Object Explorer panel, right click *.\vantage (SQL Server 12.0.2000 – sa)* and select *Properties*.
22. From the Select a page panel, go to *Memory* and set *Maximum server memory (in MB)* to 75% of the host system's memory. For example, if the system's memory is 8 GB (8192 MB), then the maximum server memory for SQL should be set to 6 GB (6144 MB) ( $8192 \times 0.75 = 6144$ ).

**23.** Click OK to close the Microsoft SQL Server Management Studio window.

Now that SQL Server Standard is installed and configured for Vantage, install the Vantage domain database as explained in this topic: [Installing the Vantage Domain Database](#). The Vantage installer will detect that SQL Standard is already installed, will not install SQL Express, and will attach to the installed instance.

## Installing SQL Server 2016/2019 Standard

Follow these steps to install SQL Server 2016 SP1 Standard or SQL Server 2019 Standard on a server (skip this topic if you have already either of these versions installed):

1. Launch setup from the SQL Server 2016/2019 Standard installation media.
2. In the SQL Server Installation Center, select *Installation* on the left.
3. Select *New SQL Server Stand-alone installation or add features to an existing installation*.
4. On the Product Key page, enter a product key and click *Next*.
5. Accept the license terms and click *Next*.
6. Click *Next* on the Microsoft Update page and the Install Rules page.
7. On the Feature Selection page, click *Feature Selection* on the left, enable *Database Engine Services* and click *Next*.
8. On the Instance Configuration page, select *Named instance*, enter *VANTAGE* and click *Next*.
9. Click the cell where the SQL Server Database Engine Row and Account Name column intersect. After selecting the cell, click the drop-down list and select *<<Browse...>>*.
10. In the *Enter the object name to select* field, type *NETWORK SERVICE* and click OK. Then click *Next* on the Server Configuration page.
11. On the Database Engine Configuration page, select *Mixed Mode (SQL Server authentication and Windows authentication)*. Enter *vantage12!* for the password and click the *Add Current User* button.
12. (Optional) If you would like to specify a non-default location for the database files, go to the Database Engine Configuration page, select the Data Directories tab, and change the Data root directory path.
13. Click *Next* on the Database Engine Configuration page.
14. Click *Install* on the Ready to Install page.
15. When installation completes, click *Close* and close the SQL Server Installation window.
16. (SQL Server 2016) Install SQL Server 2016 Service Pack 1 (SP1):  
<https://www.microsoft.com/en-us/download/details.aspx?id=54276>

## Installing SQL Server Management Studio

Management Studio is not automatically installed for SQL Server 2016/2019. To install and configure it, follow these steps:

1. Browse to <https://msdn.microsoft.com/en-us/library/mt238290.aspx>.
2. Click the link to "Download SQL Server Management Studio." At the time this document was written, version 18.9.2 is available.
3. After the download completes, launch the setup and click Install.
4. Click Close when the installation completes.

After the SQL Server Management Studio has been installed, it must be used to set the maximum limit for SQL Server's memory consumption:

1. From the Start menu, launch the SQL Server Management Studio.
2. Connect to the instance using SQL Server Authentication:  
Server name: .\VANTAGE  
Authentication: SQL Server Authentication  
Login: sa  
Password: vantage12!
3. Right-click the hostname at the top of the Object Explorer tree and select Properties.
4. From the Select a page panel, go to *Memory* and set *Maximum server memory (in MB)* to 75% of the host system's memory. For example, if the system's memory is 8 GB (8192 MB), then the maximum server memory for SQL should be set to 6 GB (6144 MB) ( $8192 \times 0.75 = 6144$ ).
5. Click *OK* to close the Microsoft SQL Server Management Studio window.

Now that SQL Server Standard is installed and configured for Vantage, install the Vantage domain database as explained in this topic: [Installing the Vantage Domain Database](#). The Vantage installer will detect that SQL Standard is already installed, will not install SQL Express, and will attach to the installed instance.

## Installing the Vantage Database

If you have already installed MS SQL Server 2012, 2014, 2016, or 2019 the Vantage Installer allows you to install or upgrade a current Vantage database in the existing SQL installation. You can install in any of these MS SQL database versions:

- SQL Express
- SQL Standard, SQL Standard with Mirroring, SQL Standard with Clustering
- SQL Enterprise and SQL Enterprise with Clustering

Before you begin, follow the prerequisite procedure below.

### Prerequisites for Instance Installation

It is assumed you have already created a SQL database instance into which a Vantage database instance can be deployed. The database instance must meet certain prerequisites before you can use the Vantage utility to deploy a Vantage database instance:

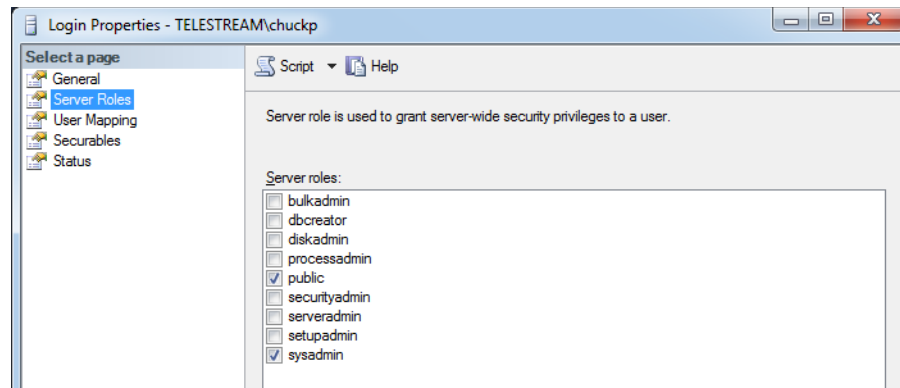
- The SQL instance must be deployed as a named instance.
- The SQL instance must include a SQL or active directory user account. The user can be sa or another account, and any password may be used.

The user account installing the Vantage database must have the *sysadmin* role assigned. The steps below explain how to assign a role.

- The user account running the Vantage database after it is installed can have the *db\_owner* and *dbcreator* roles assigned instead of *sysadmin*, if you prefer the user to have lower privileges.

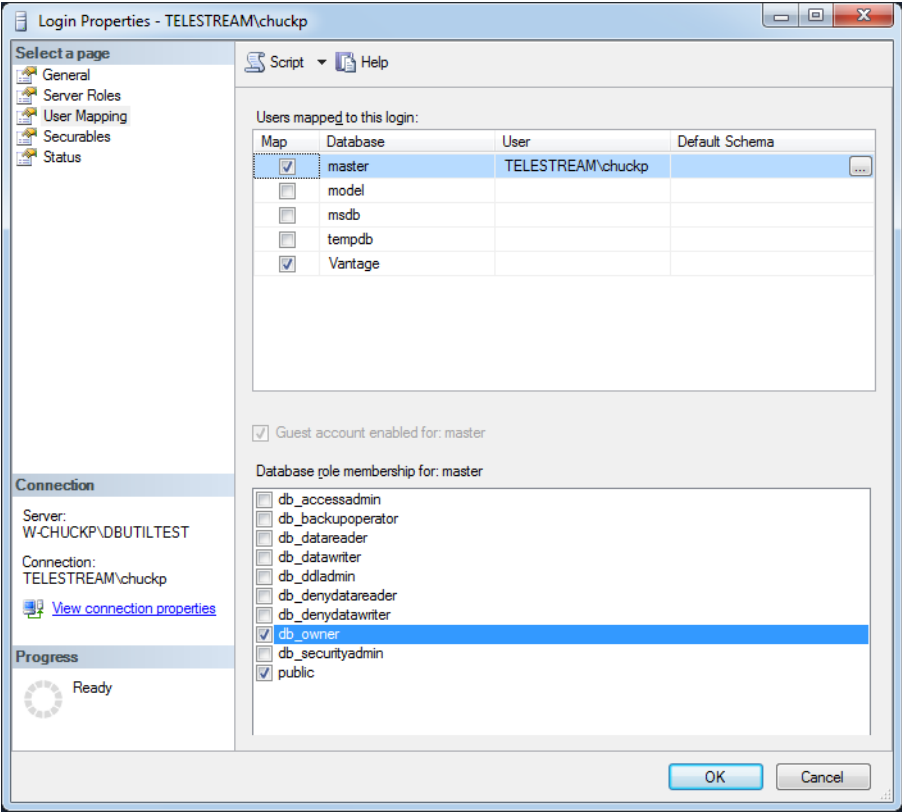
## Configuring the Administrator Role

1. In the SQL Server Management Studio > Object Explorer panel, expand Security, and expand Logins.
2. Right-click the *sa* user or another user that you want to use as the administrator login, and select *Properties*.
3. Go to Server Roles and enable *public* and *sysadmin*. Click *OK*. This gives the user system administrator privileges for the database instance.

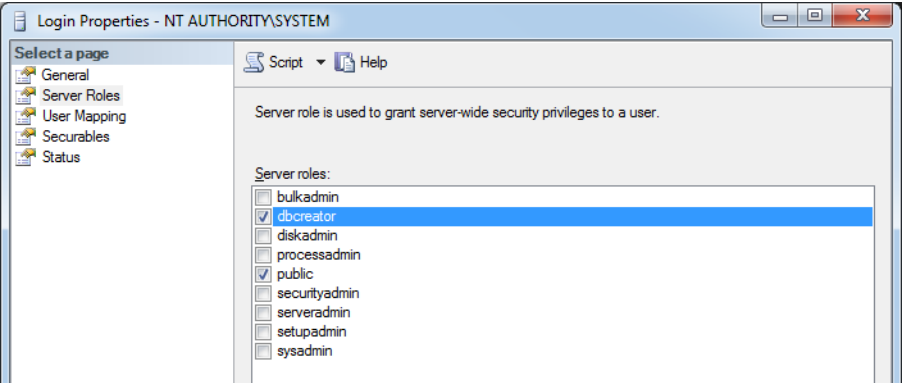


## Configuring the Vantage User Role

1. Right-click the current Windows user and select *Properties*.
2. Click *User Mapping*. Check *master* or Vantage (if present) in the database column, and check *db\_owner*. Click *OK*.



3. Right-click the Windows user and select *Properties* again.
4. Click *Server Roles* and check *dbcreator* to enable it. Click *OK*. This gives the current Windows user sufficient privileges to run the Vantage database instance after installation.



5. From the Select a page panel, go to *Memory* and set *Maximum server memory (in MB)* to 75% of the host system's memory. For example, if the system's memory is 8 GB (8192 MB), then the maximum server memory for SQL should be set to 6 GB (6144 MB) ( $8192 \times 0.75 = 6144$ ).
6. Click OK to close the Microsoft SQL Server Management Studio window.

## Installing the Vantage Domain Database

This task installs a clean new Vantage domain database instance into the previously installed SQL database. Follow these steps:

1. Log into the database server with a local administrator account, and make sure that virus-checking software and Windows Firewall is off.

---

**Note:** To effectively operate Vantage services with other networked devices or systems, you must turn off Windows Firewall.

---

2. Stop the SQL Server Agent Service in Start > Services, if it is running.
3. Run the Vantage \_8.1\_Setup installer. See [Vantage Installers Overview](#) for details.
4. When the Welcome dialog appears, click Next to display the license agreement.
5. License Agreement—Click *I Accept* if you agree to the license terms, and then click Next.
6. Select *Array {Multi-Node} Installation* and click Next.
7. Select the type of installation you want to perform: *Install Product* or *Custom Install*. *Install Product* lists products and options in licensed groups. *Custom Install* lists every Vantage component and option and allows you to select what you want. Click Next.
8. Browse to Configure the installation locations for the Installation base, the default Vantage Store. Defaults are recommended.
9. Enable Install Vantage Database to install the Vantage database.
10. When Ready to Install appears, click *Install* to begin installation, which takes a few minutes. Progress is displayed as the installation takes place.

---

**Note:** The Vantage Setup program checks for an existing SQL Server installation, and if found, Setup skips the installation of SQL Server. If SQL Server is not found, SQL Server 2019 Express will be installed. Similarly, if no Vantage database is found, a new one is installed. If a Vantage database is found, it is upgraded; upgrading preserves workflows, design items, job history, catalogs, stores, application configurations, user settings and licenses.

---

11. Click Next when the installer indicates it is finished.
12. The installer displays *Installation was successful!* (or indicates errors if unsuccessful). Click Done to close the installer application. Database installation is complete.



13. Launch the SQL Server Management Studio.
14. Connect to the instance using SQL Server Authentication:
  - Server name: .\VANTAGE
  - Authentication: SQL Server Authentication
  - Login: sa
  - Password: vantage12!
15. Right-click the hostname at the top of the Object Explorer tree and select Properties.
16. Go to Memory on the left and set "Maximum server memory (in MB)" to 75% of the server's memory. Click OK.
17. You are now ready to install or upgrade Vantage:

---

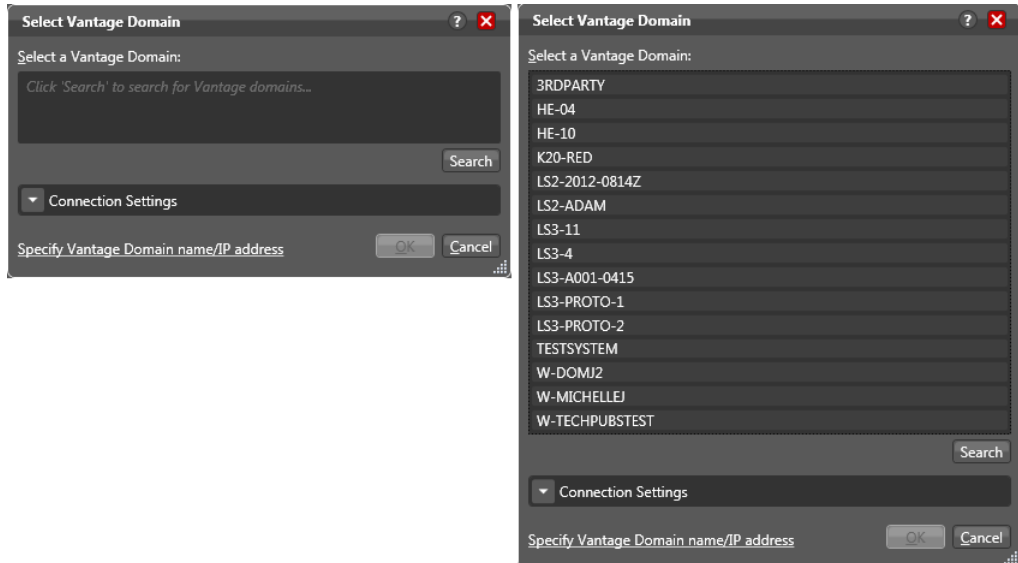
**Note:** For detailed Vantage installation instructions, please refer to the *Vantage Installation Guide*, available as a standalone guide and also included in the *Vantage Domain Management Guide*.

---

- a. **New Vantage Installations:** If you are installing a new Vantage instance, run the Vantage\_8.1\_Setup.exe installer again , select *Array {Multi-Node} Installation*, select *Custom*, select the components you want, but do NOT select *Database*. This ensures Vantage installs, but the database is not touched.
- b. **Upgrading Vantage:** If you are upgrading an existing Vantage instance, use the Control Panel Programs and Features to remove only Vantage but leave MS SQL and the domain database in place. Then run the Vantage\_8.1\_Setup.exe installer , select *Array {Multi-Node} Installation*, select *Custom*, select the components you want, but do NOT select *Database*. This ensures Vantage installs, but the upgraded database is not touched.

18. After Vantage installation, use the Vantage Management Console > File > Change Vantage Domain (shown below) to find and connect your Vantage installation to the deployed database. Use the Search button to populate the list.

If you installed a Vantage database with a custom name and password, you may need to select *Specify Vantage Domain name/IP Address*. Then enter the server name, the custom database name, expand the *Connection* settings, and enter the custom Login and Password. When you click OK, the Vantage Management Console should connect to the database and begin normal operation.



**REMINDER:** If you use Windows authentication, you must also set the SQL Server service Log On to the same Windows account that you will use for database authentication. To change the SQL Server service Log On, select Start > Administrative Tools > Services > SQL Server > Properties > Log On > This account.

19. If necessary (for a new installation), install Vantage licenses using the Vantage Management Console > Licenses panel and configure Vantage as described in the Vantage Domain Management Guide.
20. If you have deployed a new database or replaced an existing database with a new one, the domain will not have any ComponentPacs installed. When you run the Vantage Setup installer to install Vantage components and services after deploying the database, the major ComponentPacs will be installed. If you do not run the Vantage Setup installer after database deployment on the database server, or if you wish to install additional ComponentPacs, use the Vantage Management Console > ComponentPac Management feature to install the ComponentPacs.
21. Lastly, if you assigned the Vantage services to the host name of the database server before using the Database Deployment Utility, use the Microsoft Services Console to restart the Vantage services after the database is deployed. Also close and reopen the Vantage Management Console and Workflow Designer. These operations prevent a situation where Vantage action templates and fulfillment schemes do not deploy properly.

## Database Maintenance Topics

The topics covered in the remainder of this guide explain how to perform typical database maintenance procedures:

- [Backing Up and Restoring the Vantage Database](#)
- [Shrinking a Full Database](#)
- [Moving the Vantage Domain Database to Another Database](#)

## Backing Up and Restoring the Vantage Database

The Domain Backup feature allows you to save archival copies of the [Vantage domain database](#) in a separate file. The Domain Restore feature allows you to replace your current Vantage domain database with the contents of a previously-backed up domain. The domain backup and restore features are primarily used for the following:

- Returning the database to a previously backed-up state.
- Preparation for database mirroring.

---

**Note:** The domain backup and restore features are not designed for use during Vantage upgrades. If you back up the database from a specific version of Vantage, that backup can only be restored to the same Vantage software version. During a Vantage upgrade, the Vantage installers manage any required database updates as described in *Upgrading from a Previous Version* in the *Vantage Installation Guide* or the *Vantage Domain Management Guide*.

---

The following topics describe domain backup and restore:

- [Understanding Domain Backup and Restore](#)
- [Backing Up the Domain](#)
- [Restoring the Domain](#)

## Understanding Domain Backup and Restore

During a domain backup, Vantage creates a single backup file that contains all workflows, all services, and all jobs registered in the domain. It is important to remember that the backup file contents reflect the domain contents as of the moment the backup file is created. To capture changes made after a backup, you must create another backup.

When you restore a domain, all services are stopped, the current database contents are irretrievably destroyed, and the backup file you specify is used to create the replacement database. The services defined in the backup file are started and the Vantage domain database repopulates with the backup database values.

Because the restore feature irretrievably destroys the contents of the current database, Telestream recommends that you back up the current database before restoring a previous database. Backing up the current database captures all database changes made since the last backup, and it gives you a backup file that you can use to restore the current database if necessary.

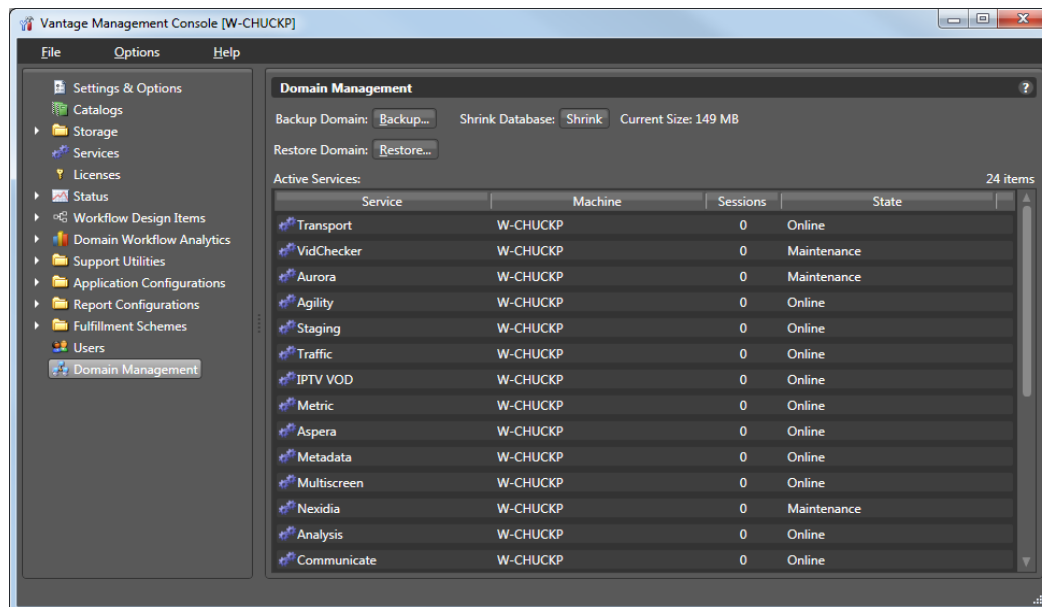
## Backing Up the Domain

To back up the Vantage domain database, do the following:

1. Start the Vantage Management Console as described in *Starting the Vantage Management Console* in the *Vantage System Administration Guide* or the *Vantage Domain Management Guide*.

2. In the components panel, select Domain Management.

Vantage displays the Domain Management details panel shown in this figure:



3. Verify that all services in the Active Services list are hosting 0 sessions.

---

**Note:** Although you can create a successful backup while services are executing workflow tasks, some job records may be lost. It is best to back up the domain when there is no activity in the domain.

---

4. Click the Backup... button.
5. In the *Save the domain* dialog, browse to the folder where you want to store the backup file, and click Save.
6. When the Backup Complete message appears, click OK.

## Restoring the Domain

---

**CAUTION:** Telestream recommends that you restore a Vantage domain using the same machine that created the backup file. If you restore the domain from another machine, the services defined in the database must match the services installed on the other machine.

---

To restore a Vantage domain database, do the following:

1. Start the Vantage Management Console as described in *Starting the Vantage Management Console* in the *Vantage System Administration Guide* or the *Vantage Domain Management Guide*.
2. In the components panel, select Domain Management.  
Vantage displays the Domain Management panel shown in the previous figure.
3. To provide the option to return to the current Vantage domain database later, back up the current domain database as described in [Backing Up the Domain](#).

---

**CAUTION:** Always back up your current database before restoring it to an earlier backup. Restoring your Vantage domain database overwrites the entire contents of the current database with the contents of the backup file selected.

---

4. Verify that all services in the Active Services list are hosting 0 sessions.

---

**Note:** When you restore a domain, all services are stopped, and all information related to any jobs in progress is lost. The restored database contains only the domain information captured when the domain was backed up.

---

5. Click the Restore... button, read the information dialog that appears, and click OK.
6. In the *Load the domain* dialog, browse to the backup file you want to restore, select the backup file, and click Open.
7. When the Restore Complete message appears, click OK.

## Shrinking a Full Database

If a Vantage installation using SQL Express nears the SQL Express database size limit, Vantage stops accepting jobs. Attempts to submit jobs manually launches a warning dialog indicating that the database is at or near capacity.

You may be able to resolve this issue using the Vantage Shrink Database feature, which applies the MS SQL DBCC SHRINKDATABASE command to the existing database to delete unused entries and reduce file size. The shrink process may take some time and may slow database performance, so it should be done only when the Vantage system is not busy.

Use this procedure to shrink the database:

1. Start the Vantage Management Console.
2. In the components panel, select Domain Management.  
 Vantage displays the Domain Management details panel (see the preceding figure).
3. To protect against potential data loss, use the Backup... button to back up the current domain database as described in [Backing Up the Domain](#).
4. Click the Shrink button to shrink the database.

A dialog pops up to explain that the Shrink command may affect database performance and should be done only when Vantage is not busy.

A Status message indicates progress.

Current Size displays the database size next to the button, so you can see any changes immediately upon completion of the shrink command.

Multiple presses of the button may shrink the database additionally each time.

# Moving the Vantage Domain Database to Another Database

You might want to move the Vantage domain database because:

- You are upgrading SQL Server from Express to Standard
- You are upgrading SQL Server from an older version to a newer one
- You are moving the database from one server to another

---

**Note:** This procedure backs up the database, moves the database to a different SQL Server version and/or server, and restores the database. Vantage does not support a Vantage restore from one Vantage database version to another. If you are upgrading Vantage and moving the database, upgrade Vantage first, and then move the database.

---

---

**Note:** This guide does not provide instructions for moving a mirrored database. Consult your database administrator or contact your Telestream representative regarding installation service options.

---

To move a Vantage domain database, follow the procedures in the following topics in the sequence presented:

1. [Preparing for the Move](#)
2. [Backing up the Existing Database](#)
3. [Removing the Vantage Domain Database](#)
4. [Removing Microsoft SQL Server](#)
5. [Installing SQL Server Standard](#)
6. [Installing the Vantage Domain Database](#)
7. [Restoring the Vantage Domain Database Backup](#)
8. [Finishing the Move](#)



## Preparing for the Move

If you are upgrading SQL Server, it is recommended but not required that you back up the Vantage domain database. However, if you are moving the Vantage domain database to a new server, you must backup the database, as the backup file will be used to restore the domain on the new server.

To back up the existing Vantage domain database so that it can be transferred to the new database later, follow these steps:

1. Use Vantage Workflow Designer to deactivate all active workflows to prevent new jobs from starting.
2. Use the Job Status Views tab in Vantage Workflow Designer, the Vantage Job Status Views web application, or Vantage Dashboard to either determine when all jobs are complete or stop any jobs in process or in waiting.
3. If you are moving the database to another server, do the following:
  - a. Take note of any Storage, Variables, and/or Qualification Rules settings for each service. (In the Vantage Management Console, select Services. In the service panel, click each service and check the tabs at the bottom of the window.)  
When you move the Vantage domain database from one server to another, the Storage, Variable, and Qualification rule configuration for each service is lost. Write down any configuration that you want to transfer to the new server.

---

**Note:** The service Storage, Variable, and Qualification Rule configuration is not lost when you change the SQL Server version on a server. Skip to Step 4 if you are not moving the Vantage domain database to a different server.


---

- b. In the Vantage Management Console, remove all services from the Vantage domain as described in *Removing a Service from the Domain* in the *Vantage Domain Management Guide*.

---

**Note:** The default Vantage user account is *Administrator* with no password. This account has administrative privileges.

---

- c. In the Vantage Management Console, select Licenses in the components panel.
  - d. On the Licenses tab, select all licenses and click the Delete button .

---

**Note:** To add the licenses back at the end of this procedure, you will need access to the license files. If you do not know where these files are, locate them now before you delete them from the existing database.

---

4. If you are changing the Microsoft SQL version on a server (and not moving the database to another server), place all services in Maintenance Mode as described in *Entering and Exiting Service Maintenance Mode*.

## Backing up the Existing Database

If you are upgrading SQL Server, it is recommended that you back up the Vantage domain database. If you are moving the Vantage domain database to a new server, you must back up the database, as the backup file will be used to restore the domain on the new server.

To back up the existing Vantage domain database so that it can be transferred to the new database later, follow these steps:

1. In the Vantage Management Console, select the domain you want to modify, select Domain Management in the components panel, click Backup..., and use the file save dialog to save the backup file to a safe location.

You will need to access the backup file to restore the Vantage domain database after you move it. For more information, see [Backing Up the Domain](#).

2. Close all Vantage clients, including Vantage Workflow Designer, Vantage Web Applications, Vantage Workflow Portal, and Vantage Management Console.

## Removing the Vantage Domain Database

The Vantage Domain Database may or may not be present as a separate entry in the Windows Control Panel Programs and Features window, depending on how it was originally installed.

In either case, the Domain Database must be removed using one of the following procedures:

**If the Domain Database is present** in the Control Panel list, remove it as follows:

1. Log into the server with a local administrator account.
2. Open the control panel tool to remove programs in your operating system:  
Control Panel > Programs and Features > Uninstall Programs.
3. Select Vantage Domain Database and click Remove or Uninstall.

**If the Domain Database is not present** in the Control Panel list, remove it as follows:

1. Log into the server with a local administrator account.
2. Open the control panel tool to remove programs in your operating system:  
Control Panel > Programs and Features > Uninstall Programs.
3. Select Vantage and click Change.
4. Deselect the check box for Vantage Domain Database and continue with removal.

## Removing Microsoft SQL Server

When you are upgrading Microsoft SQL Server or moving the Vantage domain database to another server, you may want to remove the old version of SQL Server.

To remove Microsoft SQL Server, follow these steps:

1. Log into the server with a local administrator account.
2. Open the control panel tool for removing programs:  
Control Panel > Programs and Features > Uninstall Programs.
3. Select Microsoft SQL Server and click Remove or Uninstall.

---

**Note:** If you are prompted to stop the SQL Server (VANTAGE) service, go to Start > Services and stop the service before clicking Retry to continue with uninstalling.

---

**Note:** If you have multiple instances (for example SQLEXPRESS and VANTAGE), you will need to remove them both.

---

4. Select Microsoft SQL Server Native Client and click Remove or Uninstall.

---

**Note:** Uninstalling the SQL Server does not delete your Vantage workflows, resources, or transaction history. It leaves your domain database files intact in [Install\_Drive]:\Program Files\Telestream\Vantage\Database. For information on removing the database files, see *Uninstalling Vantage from a Server* in the *Vantage Installation Guide* or the *Vantage Domain Management Guide*.

---

At this point, the SQL Server is removed but the database files and any Vantage services and clients that were installed on the server remain installed. The domain cannot resume operation until the SQL Server is reinstalled on this server or set up on another server.

## Installing SQL Server Standard

Please see [Installing SQL Server 2012 Standard](#), [Installing SQL Server 2014 Standard](#), or [Installing SQL Server 2016/2019 Standard](#) earlier in this chapter. After installing SQL, continue with the next topic to install the Vantage database.

## Installing the Vantage Domain Database

This task installs the Vantage domain database instance. Follow these steps:

1. Log into the database server with a local administrator account, and make sure that virus-checking software and Windows Firewall is off.

---

**Note:** To effectively operate Vantage services with other networked devices or systems, you must turn off Windows Firewall.

---

2. Stop the SQL Server Agent Service in Start > Services, if it is running.
3. Run the Vantage \_8.1\_Setup installer. See [Vantage Installers Overview](#) for details.
4. When the Welcome dialog appears, click Next to display the license agreement.
5. License Agreement—Click *I Accept* if you agree to the license terms, and then click Next.
6. Select *Array {Multi-Node} Installation* and click Next.
7. Select the type of installation you want to perform: *Install Product* or *Custom Install*. *Install Product* lists products and options in licensed groups. *Custom Install* lists every Vantage component and option and allows you to select what you want. Click Next.
8. Browse to Configure the installation locations for the Installation base, the default Vantage Store. Defaults are recommended.
9. Enable Install Vantage Database to install the Vantage database.
10. When Ready to Install appears, click *Install* to begin installation, which takes a few minutes. Progress is displayed as the installation takes place.

---

**Note:** The Vantage Setup program checks for an existing SQL Server installation, and if found, Setup skips the installation of SQL Server. If SQL Server is not found, SQL Server 2019 Express will be installed. Similarly, if no Vantage database is found, a new one is installed. If a Vantage database is found, it is upgraded; upgrading preserves workflows, design items, job history, catalogs, stores, application configurations, user settings, and licenses.

---

11. Click Next when the installer indicates it is finished.
12. The installer displays *Installation was successful!* (or indicates errors if unsuccessful). Click Done to close the installer application. Database installation is complete.

If you are upgrading SQL Server on the same server, the upgrade is almost complete. Vantage should have discovered the old database files. Now you need to finish the process as described in [Finishing the Move](#).

If the old database files are not found, or if you are installing the Vantage domain database on a different server, restore the database from the backup file as described in [Restoring the Vantage Domain Database Backup](#).

## Restoring the Vantage Domain Database Backup

To restore the Vantage domain database using the backup file you previously created, follow these steps:

1. Start the Vantage Management Console on any Vantage server in the domain.

---


**Note:** If you have moved the Vantage domain database to a new server, the name of the Vantage domain changed to the name of the new host server.


---

2. In the Vantage Management Console, select the domain to modify, select Domain Management in the components panel, click Restore..., and select the file to restore. For more information, see *Backing Up the Domain* in the *Vantage System Administration Guide* or the *Vantage Domain Management Guide*.

## Finishing the Move

To finish the move, you must enable the services you disabled when preparing for the move. If you moved the Vantage domain database to another server, you must also install Vantage licenses. To return Vantage to operation, follow these steps:

1. If you changed the Microsoft SQL version on a server (and did not move the database to another server), do the following:
  - a. Remove all services from Maintenance Mode as described in *Entering and Exiting Service Maintenance Mode* in the *Vantage System Administration Guide* or the *Vantage Domain Management Guide*.
  - b. Skip to [Step 4](#).
2. If you moved the Vantage domain database to a different server, activate Vantage Domain licenses as follows:
  - a. In the Vantage Management Console, open the domain you want to modify, and select Licenses in the components panel.
  - b. On the Licenses tab, click the Add License button  and use the open file dialog to select the license file.  
If your domain has multiple license files (for multiple features), repeat this step for additional licenses.

- 3.** If you moved the database to another server, update the configuration of services as follows:
  - a.** In the Vantage Management Console, open the domain you want to modify, and select Services in the components panel.
  - b.** In the Services panel, click the Add Service button  and use the dialog to select a service to add.
  - c.** If any Storage, Variables, and/or Qualification Rules settings were configured for the service, add them now.
  - d.** Repeat this step for each service until all services are updated.
- 4.** Use Vantage Workflow Designer to reactivate all workflows.